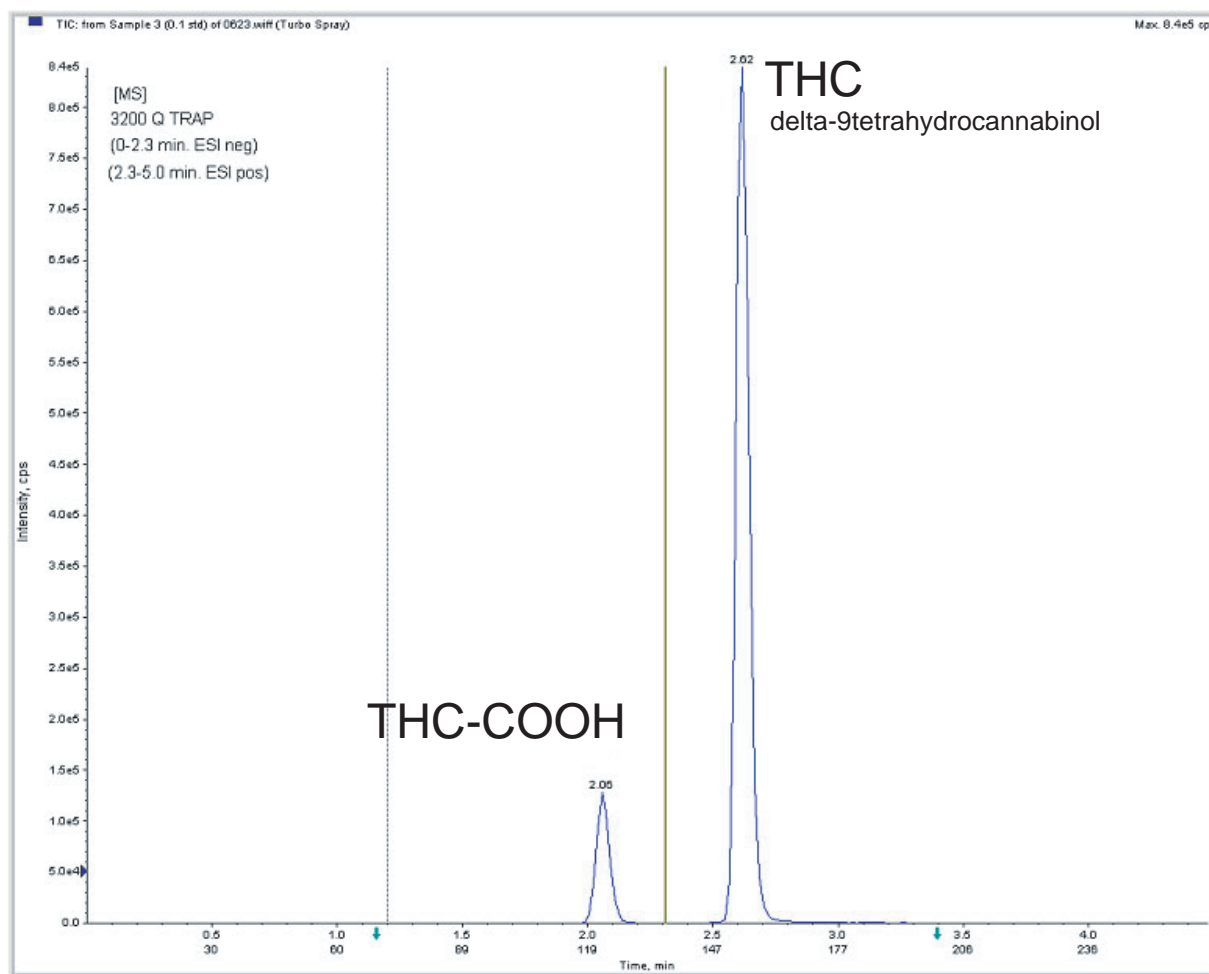


Unison US-C18

50 x 2 mm

Application

LC-MS/MS Application of Marijuana and its Metabolite in Blood  
 血液中のマリファナ成分と代謝物 (LC-MS/MS)



Unison US-C18, 50 x 2 mm

A: 0.1% HCOOH in water, B: 0.1% HCOOH in acetonitrile  
 50-90%B in 5 min, 0.5 mL/min, 28 deg. C

3200 Q Trap  
 0-2.3 min, ESI Negative, 2.3-5 min, ESI Positive

Whole blood, SPE extraction  
 LOD THC = 0.1ng/mL  
 LOD THC-COOH = 0.5ng/mL

Ref.) Journal of Analytical Toxicology, October 2009, Volume 33, Number 8, pages 461-468

Courtesy of Massachusetts State Police Crime Lab., USA