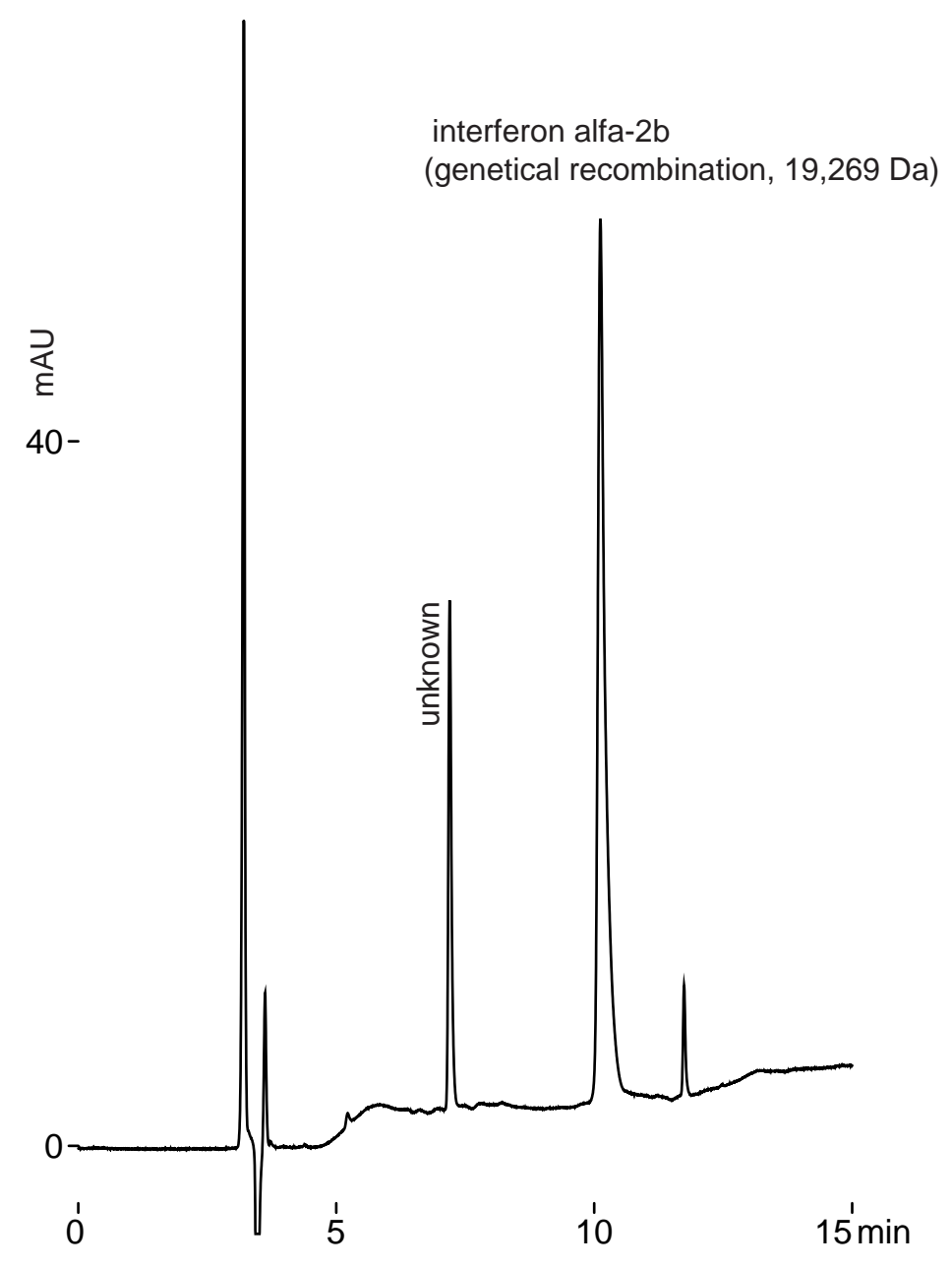


Intrada WP-RP

250 x 4.6 mm

Application

Interferon
インターフェロン



Intrada WP-RP, 250 x 4.6 mm
A: water / TFA = 100 / 0.1
B: acetonitrile / TFA = 100 / 0.07
15-50%B (0-9min), 50%B (9-12min)
1 mL/min (14 MPa), 37deg.C, 220nm
8uL (72ng)