

Cadenza CD-C18

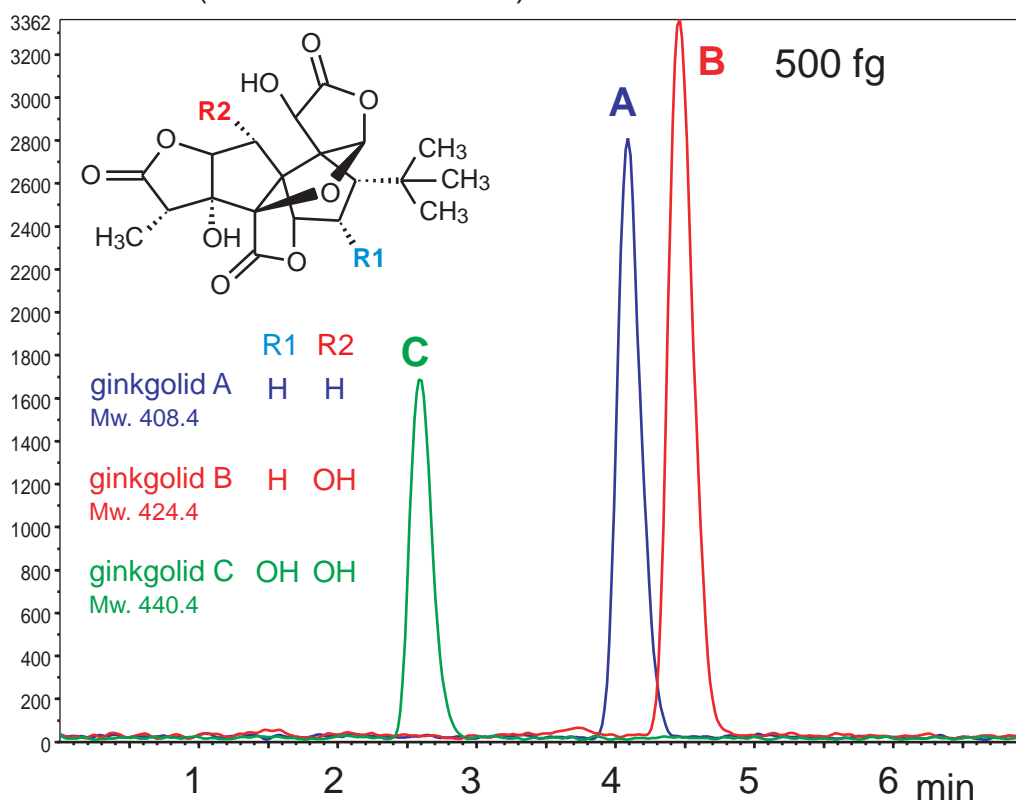
100 x 2 mm

Application

## LC-MS Application for Substances in Ginkgo Leaves

LC-MSアプリケーション（イチョウ葉の有効成分，ギンコライド）

API4000 (TAKARA BIO INC.)



Cadenza CD-C18, 100 x 2 mm  
 60% methanol, 0.2 mL/min, 40 °C, 5µL(100fg/µL)  
 API4000: ESI, MRM Negative  
 Q1/Q3:  
 ginkgolide A 407/351  
 ginkgolide B 423/367  
 ginkgolide C 439/383

Courtesy of J.Watanabe, TAKARA BIO INC.