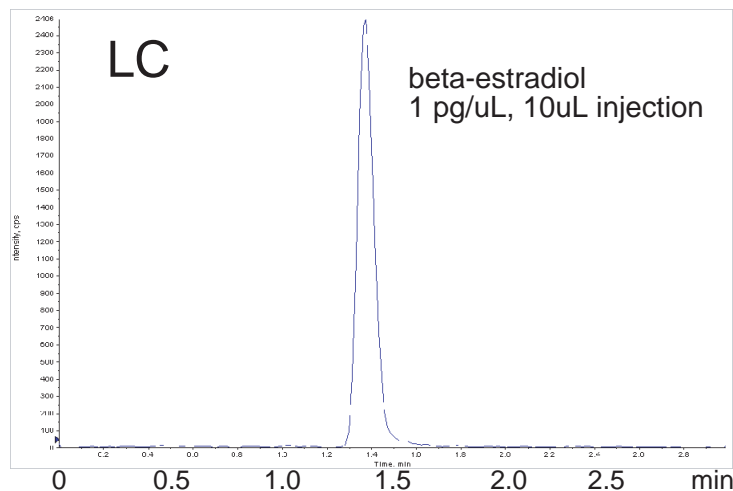


Cadenza CD-C18

50 x 2 mm

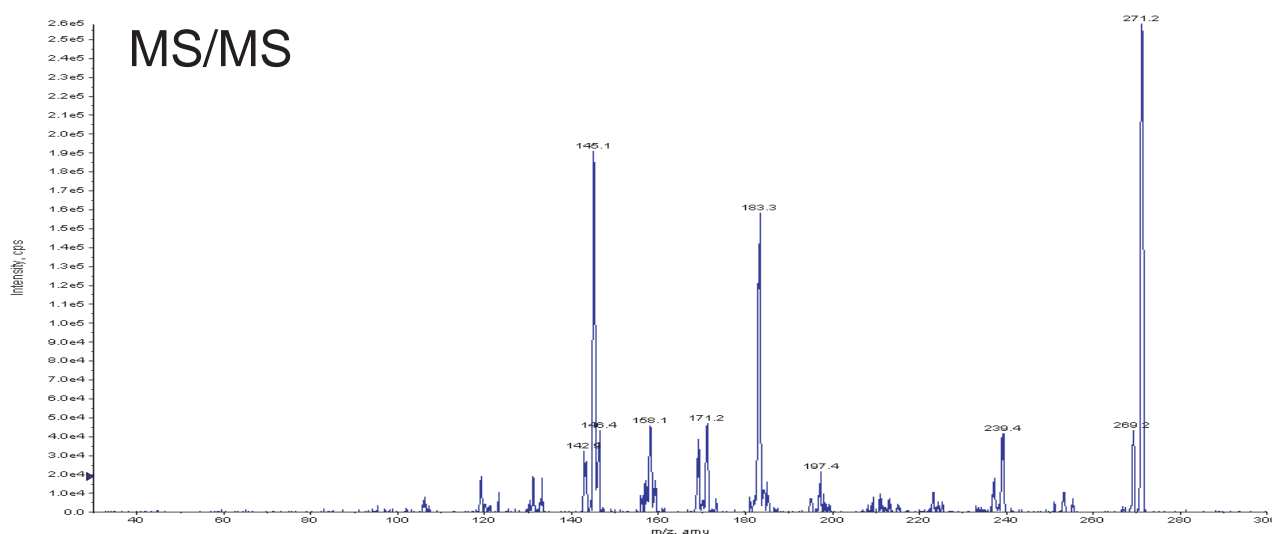
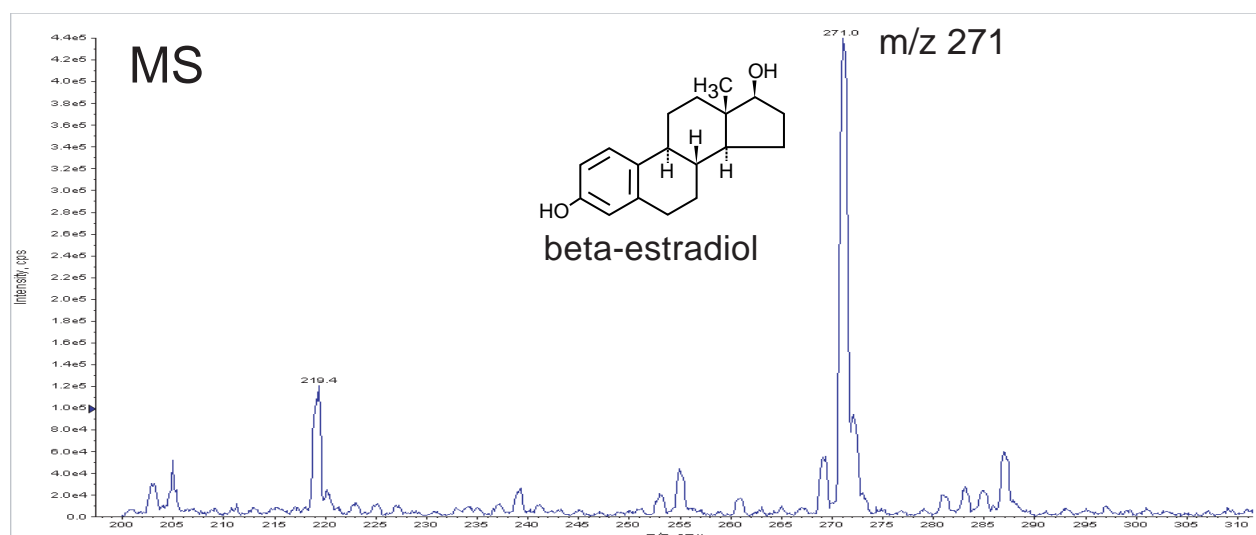
Application

LC-MS/MS High Throughput Analysis



[LC]
Cadenza CD-C18, 50 x 2 mm
methanol / water = 75 / 25
0.2 mL/min, 40 °C

[MS]
API 4000
ESI-negative



Courtesy of TAKARA BIO INC.